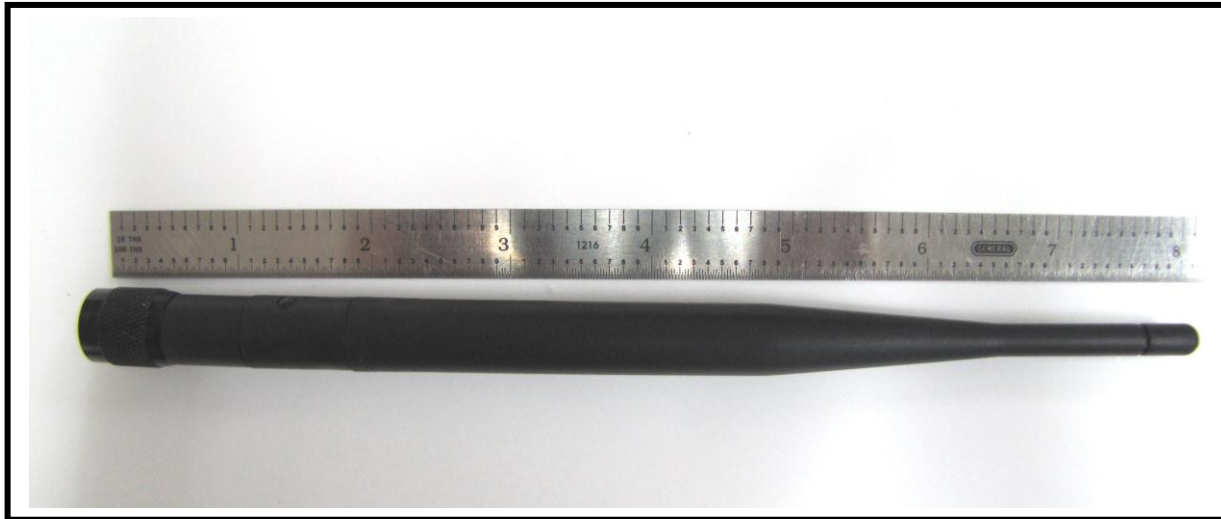




Picture of the Part



Application

WPANTDP020 Antenna is a 2.4 GHz ISM Band Omni Directional Whip Antenna. It comes with a RP TNC-M connector and has a swivel mechanism.

WP Wireless can assist your engineers to optimize mounting positions for these antennas in your specific application and can further assist to trouble shoot system integration issues such as TRP/TIS and FCC requirements. WP Wireless specializes in developing customized Antenna solutions. Please contact sales@wp-wireless.com with your specific application requirements.

Electrical Properties

Parameter	Antenna Performance
Operating Frequency	2.4 – 2.485 GHz
Recommended Impedance of the customer Radio Module[Ω]	50Ω
VSWR – Typical	< 2:1
Peak Gain [dBi] (Typical)	4 dBi
Efficiency [%] (Typical)	80 - 90%
Polarization	Vertical
Pattern	Near Omni Directional; Also depends on installation
Accepted Power [W] (Max)	2 Watts



Mechanical / Environmental Properties

Item	Value
Dimensions	196mm (Length) X 13mm (Dia)
Antenna Color	Black
Connector	Reverse Polarity TNC-M
Antenna Plastic Radome	ABS
Operating / Storage Temperature	-40°C to +90°C
Environmental	Meets standards for UL 94V-0
Hazardous Materials	RoHS compliant

Picture of the Antenna

